



APOLLO

T5020 Mist Applicator



INSTRUCTION MANUAL

(For Professional Use Only)

DO NOT USE EQUIPMENT BEFORE READING THIS MANUAL

This manual contains important warnings and instructions.
Please read these instructions carefully and keep for your reference.

©2012 Apollo Sprayers International, Inc.

Table of Contents

1 General Safety Information:	3
2 Set up and operate your T5020 Spray Tan System:	5
3 Using your T5020 Mist Applicator:	6
4 Troubleshooting the Mist Applicator:	7
5 Maintenance:	7
6 T5020 Diagram and Parts List:	9
7 Warranty:	10

T5020 Mist Applicator™ Instruction Manual

Congratulations on purchasing the T5020 Mist Applicator. This product has been specially designed to provide an efficient application of tanning solution products.

Take a minute to read and understand how to operate your new T5020 Mist Applicator and you will be able to provide the perfect tan with every application.

Your T5020 Mist Applicator is packaged with the following:

1. T5020 Mist applicator
2. Parts Kit
3. Instruction Manual

1 General Safety Information:

Read all instructions and safety precautions before operating the unit.



THIS INDICATES A CONDITION THAT WILL CAUSE SERIOUS INJURY OR LOSS OF LIFE IF THE WARNING IS IGNORED.



THIS INDICATES A CONDITION THAT COULD CAUSE SERIOUS INJURY OR LOSS OF LIFE IF THE WARNING IS IGNORED.



THIS INDICATES A CONDITION THAT MAY CAUSE MINOR INJURY AND/OR EQUIPMENT/PROPERTY DAMAGE.



- Risk of fire or explosion! Solvent and paint fumes can explode or ignite, causing severe injury and property damage.
- Paints and solvents containing HALOGENATED HYDROCARBONS can react explosively with aluminum. Always check the product's label before using these materials in the unit.
- Hazardous vapors: Paint, solvents, insecticides and other materials may be harmful if inhaled, causing severe nausea, fainting or poisoning.
- Make sure the room is well ventilated. Avoid all ignition sources, such as static electricity sparks, open flames, hot objects, sparks from connecting and disconnecting power cords, and working light switches.
- Follow the material and solvent manufacturers' safety precautions and warnings. Do not use liquids with flash points less than 100 degrees Fahrenheit (38 degrees Celsius).
- Static electricity can be produced by HVLP spraying. Make sure any electrically conductive object being sprayed is grounded to prevent static sparking. The sprayer is grounded to prevent static sparking. The spray grounded through the electrical cord. If an extension cord is necessary, the cord must be a grounded with three wires made for the appropriate voltage used.
- Use a respirator or mask whenever there is a chance that vapors may be inhaled. Read all instructions with the mask to ensure that the mask will provide the necessary protection against the inhalation of harmful vapors.
- Do not carry the turbine while spraying.
- Keep the turbine at the maximum distance from the spraying area.



CAUTION

- Tipping the Mist applicator causes the Mist applicator to clog. Dried spray material also clogs the pressure delivery tube and fittings. The Mist applicator does not function when clogging occurs.
- When not in use, be sure to disconnect the hose and place the Mist applicator into the holder in the turbine to void tipping.

GROUNDING INSTRUCTIONS

This product must be properly grounded. In the event of an electrical short circuit, grounding reduces the risk of electrical shock by providing an alternate path for the electrical current.

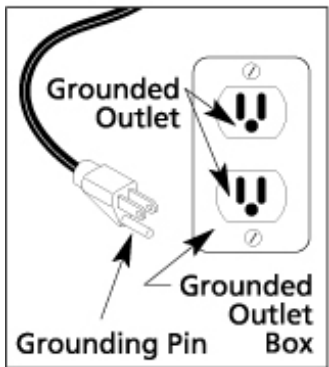
This product is equipped with a cord that has a ground wire and an appropriate ground plug. Plug the unit into an outlet that is properly installed and grounded in accordance with local codes and ordinances.

DANGER

IMPROPER INSTALLATION OF THE GROUND PLUG CAN RESULT IN THE RISK OF ELECTRICAL SHOCK. IF REPAIR OR REPLACEMENT OF THE PLUG OR CORD IS NECESSARY, DO NOT CONNECT THE GROUND WIRE TO EITHER FLAT BLADE TERMINAL. THE WIRE WITH GREEN INSULATION (WITH OR WITHOUT A YELLOW STRIPE) IS THE GROUNDING WIRE.



1. For any question regarding proper installation of the ground plug, consult a qualified (licensed or certified) electrician.
2. Do not modify the plug provided. If the plug does not fit the outlet, have the proper outlet installed by a qualified electrician.
3. This product is for use on a nominal 120-volt circuit and has a grounding plug that looks like the plug in Figure 2. Make sure that the product is connected to an outlet having the same configuration as the plug. No adapters should be used with this product.
4. If an extension cord is required, use only a three wire extension cord that has the same configuration as the unit cord, including the (round) ground terminal. Make sure that the extension cord is plugged into a properly grounded receptacle.
5. When using an extension cord, be sure it is in good condition and heavy enough to meet the specifications in the chart below. If an extension cord is needed the following wire sizes must be used.
6. (See Chart 1) Figure 2



25' cord.....	10, 12, or 14 Gauge
50' cord.....	10 or 12 Gauge
100' cord.....	10 Gauge

Chart 1 Extension Cord Requirements

2 Set Up and Operate Your T5020 Mist Applicator

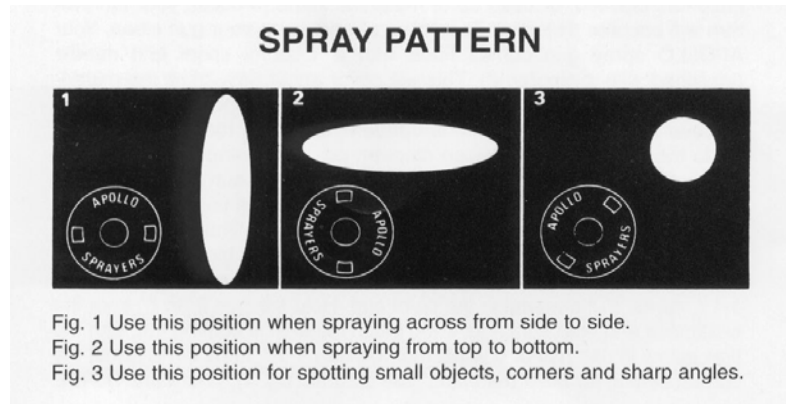
CONGRATULATIONS!! You have just purchased the finest HVLP Mist Applicator available. You are about to enjoy the great benefits of HVLP spray tanning. Our designs are the result of many years experience in manufacturing HVLP spray systems, and Mist Applicators.

Whether you are new to spray tanning, you have sprayed tans before, or are just new to HVLP spray tanning, there are some basic spraying guide lines that will help you to achieve the best results and optimum success from your new equipment. Reading this information carefully and following these simple steps will ensure that you get the best performance and results from your new TrueHVLP™ spray tanning system.

HOW HVLP MIST APPLICATOR WORKS

Your spray tanning system has three components: the motor unit, the air hose and the Mist Applicator. The motor unit when connected to the correct electrical power supply and with the on/off switch in the "on" position, provides a continuous source of clean, warm, dry, High Volume Low Pressure (HVLP) air. The air hose connects the motor unit to the Mist Applicator. Air flows through the hose to the nozzle of the specially designed Mist Applicator. Atomization of the tanning solution is achieved when the air mixes with the stream of fluid passing through the tip/nozzle. This low pressure atomization principle achieves minimal overspray (wasted spray) to the environment.

The motor unit has one air hose outlet on the side of the case and is designed to run one Mist Applicator.



Your Mist Applicator offers you many options. You can adjust (click) the air cap (#2) to three positions. One will produce a horizontal pattern for spraying across, another will produce a vertical pattern for spraying up and down, and the third will produce a round pattern for detailing muscles or other intricate parts of the body.

FAMILIARIZING YOURSELF WITH YOUR MIST APPLICATOR

Familiarize yourself with the controls on the Mist Applicator. There are three principal controls. The rotating air cap (#2), the material flow screw (#18) and the air cap locking ring (#1). Click the rotating air cap into each position. Horizontal, Vertical and 45°. When the air cap is in the 45° position the pattern is round. This is useful for spraying detail areas such as muscle toning. (Flow will increase when using the diagonal position and it is usually necessary to reduce the flow by adjusting the flow screw (#18)). (See Diagram Spray Patterns, Pg. 3). Next, turn the material flow screw (#18) anti- or counter-clockwise to open or release more fluid, clockwise to close or reduce material flow.

PREPARING TO SPRAY

You should now be ready to spray your client. Good quality results with your tanning system are a combination of careful preparation of your client, a proper spraying environment, a basic knowledge of the solution you will be using and how these solutions work with your tanning system.

Your motor unit is equipped with our new variable speed control. When you turn the motor on it will start at high speed. To lower the speed of the motor and make the unit quieter, simply rotate the knob clockwise to the desired speed. If you slow the motor too much you will notice that your Mist will not be as fine. Be careful to

always have your motor speed fast enough to atomize the solution you are spraying evenly. We suggest starting with the speed ½ way and go from there. Each solution is a little different and may require slightly different speeds.

3 Using Your T5020 Mist Applicator

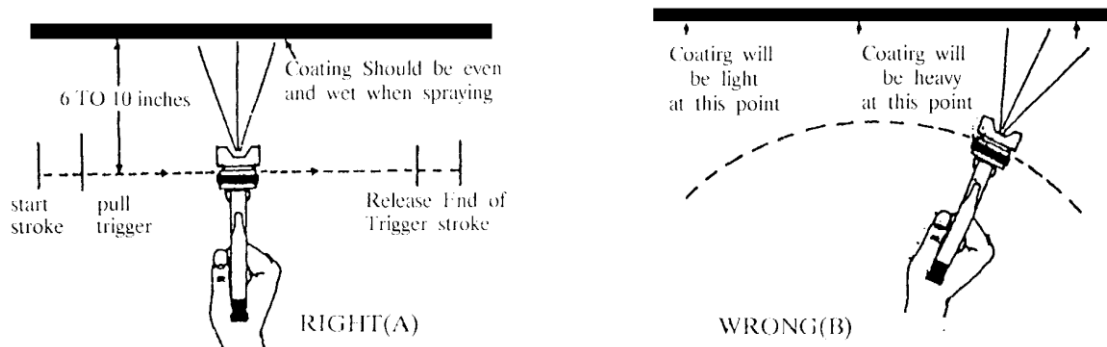
Your T5020 Mist Applicator is certified. This means your Mist Applicator only uses approximately 3psi or less. All passages and air ports are much larger than an airbrush system. If one of these air passages becomes blocked, or build up of solution starts to occur, your spray pattern will become distorted. Therefore, always keep your Mist Applicator clean. Your T5020 Mist Applicator comes fitted with a custom size tip/nozzle (#6) and needle (#15). This size has been designed to perfectly atomize a variety of UV Sunless tanning solutions. Using this size tip/nozzle and needle you can achieve from a 1/4" to 7" fan pattern, simply by rotating the air cap (#2) to the desired fan type (See Mist Applicator Diagram 1 & 2 on pages 13 & 14), opening the material flow screw (#18) counter-clockwise and moving the Mist Applicator closer or further away from the client. A little practice will enable you to master this very easy technique.

PRACTICE: Remove the cup from your Mist Applicator. Fill it approximately half way with some water. Attach the cup to the body of the Mist Applicator. Attach the Mist Applicator to the air hose. Turn the turbine unit on. You will notice air is now flowing through the air cap, this is normal and correct. Position the air cap (#2) in the horizontal position, turn the solution flow screw (#18) counter clockwise approximately 1 to 1 1/2 turns. Point the Mist Applicator away from yourself (and anyone else) and pull the trigger all the way back. You should see a "V" shaped mist (or triangle) called a fan pattern. Now, with the trigger depressed, slowly begin to turn the solution flow screw (#18) clockwise (closing). Notice that the fan pattern is beginning to get smaller. Now, reverse this and notice the pattern get larger. Take a large piece of cardboard and direct the pattern at the surface. Turn the solution flow screw 2 full turns and hold the Mist Applicator approximately 6" from the surface. Pull the trigger. Observe the outline and size of the pattern. Now, turn the solution flow screw clockwise (closing). Move the Mist Applicator an inch or two closer to the surface of the cardboard. Pull the trigger. Notice the pattern has become smaller. You can continue reducing the material flow and move the Mist Applicator even closer to the cardboard and the pattern will continue to get smaller and smaller. Next, rotate the air cap to a diagonal position (See Spray Patterns, Pg. 4). Vary the solution flow and the distance of the Mist Applicator from the work surface. Notice the change in pattern size.

Caution: Even when the turbine unit is turned off, pressure will remain in the spray cup. If you pull the trigger back, a stream of fluid will flow. To prevent accidents, turn paint flow screw (#18) clockwise until it is completely closed. The trigger is now locked in the closed position.

Note: It is not necessary to empty and clean your Mist Applicator when you pause between applications. Be sure, however, to clean your Mist Applicator thoroughly at the end of your work session. It is a bad idea to leave solution in your Mist Applicator overnight.

PROPER SPRAY TECHNIQUE



Mist Applicator recommended maintenance: Check: Cup gasket, nozzle gasket, gland seal, air cap holes, nozzle/needle assembly every 50 hours or when necessary. Clean or replace parts as needed. Mist Applicator maintenance kit part #A5256.

MIST APPLICATOR MAINTENANCE AND CLEANING

1. You do not need to clean your Mist Applicator every time you stop spraying. Either set the Mist Applicator down carefully so as not to tip it over, or hang it by the hook. You should, however, clean your Mist Applicator at the end of a work session or at the end of the day. It is not a good idea to leave solution in the Mist Applicator over night. Also, pay careful attention in keeping the cup threads clean, this includes the threads on the main gun body as well. Dried material on the threads can cause the cup to lock onto the surface making removal difficult.
2. When you have finished spraying, pour the remainder of your solution out of the Mist Applicator cup. Pour in a small amount cleaning fluid. Use a cleaner that is compatible with the solution you just sprayed (water if nothing else is available). Shake the Mist Applicator gently. Wait about one minute and spray out the cleaner in the cup.
3. If necessary, remove the Fluid tip (7) and nozzle washer (17). A standard wrench will fit the flanges on the fluid tip. Be careful not to loose or misplace the nozzle washer. Rinse with appropriate cleaner.
4. To remove the fluid needle assembly, turn the solution adjusting screw (4) all the way counter- (anti) clockwise until it comes out of the Mist Applicator. Carefully remove the spring (3). Pull the needle assembly back towards you out of the back of the Mist Applicator. Wipe or rinse clean.
5. Wipe all exposed areas clean again giving special attention to the cup threads.
6. Although they might not need attention every time you spray, you should be aware of two additional important parts on your Mist Applicator. One is the cup gasket (11) and the fluid Needle Packing (13). The cup gasket insures that the cup is properly sealed to the Mist Applicator body, the cup is properly pressurized and no fluid leaks from the Mist Applicator cup. Replace if necessary. The fluid needle packing (13) compresses around the fluid needle assembly to prevent fluid from leaking around the needle. This is adjusted by tightening (or loosening) the needle packing screw (14). Be sure that this screw is not too tight as to not permit free movement of the needle assembly. Be sure that this screw is not too loose as to permit fluid to leak around the needle. Normally, this is preset at the factory and should need no adjustment. Replace fluid needle packing (13) when it becomes impossible to prevent leaking.
7. Store your Mist Applicator for the next use.

MODEL T 5020
(Air Brush Cup)

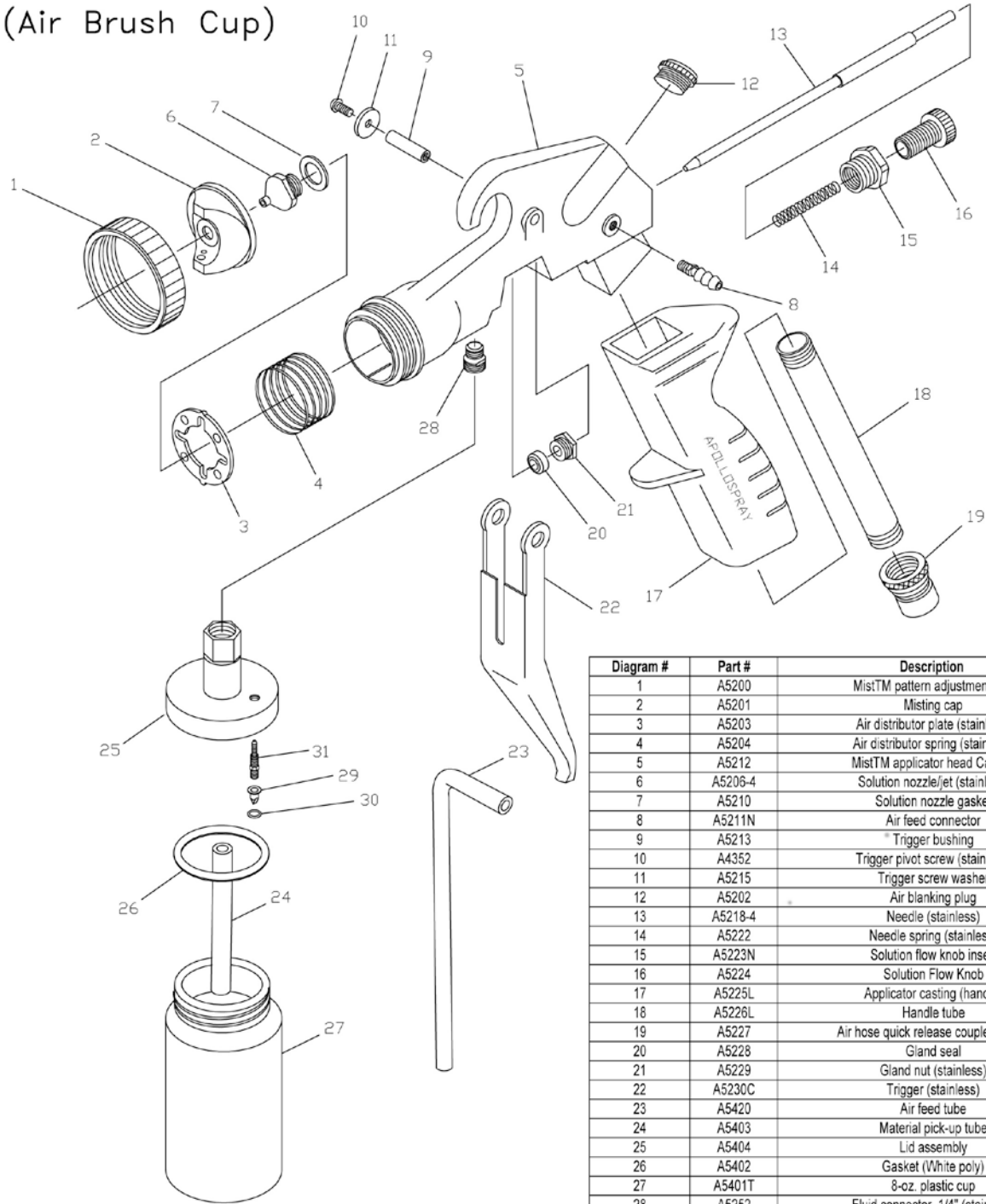


Diagram #	Part #	Description
1	A5200	Mist™ pattern adjustment ring
2	A5201	Misting cap
3	A5203	Air distributor plate (stainless)
4	A5204	Air distributor spring (stainless)
5	A5212	Mist™ applicator head Casting
6	A5206-4	Solution nozzle/jet (stainless)
7	A5210	Solution nozzle gasket
8	A5211N	Air feed connector
9	A5213	Trigger bushing
10	A4352	Trigger pivot screw (stainless)
11	A5215	Trigger screw washer
12	A5202	Air blanking plug
13	A5218-4	Needle (stainless)
14	A5222	Needle spring (stainless)
15	A5223N	Solution flow knob insert
16	A5224	Solution Flow Knob
17	A5225L	Applicator casting (handle)
18	A5226L	Handle tube
19	A5227	Air hose quick release coupler (male)
20	A5228	Gland seal
21	A5229	Gland nut (stainless)
22	A5230C	Trigger (stainless)
23	A5420	Air feed tube
24	A5403	Material pick-up tube
25	A5404	Lid assembly
26	A5402	Gasket (White poly)
27	A5401T	8-oz. plastic cup
28	A5252	Fluid connector, 1/4" (stainless)
29	A5321	Duckbill check valve
30	A5322	Duckbill o-ring
31	A5323	Air stem for duckbill check valve
	A5400	Storage lid
	A5405T	Pack of (3) 8oz cups

7 Warranty and Technical Support

For all other technical questions please call your local distributor or Apollo Sprayers Inc.

Technical Support: Available Monday-Friday, 8am-4pm, PST.

Apollo Sprayers International, Inc.
1030 Joshua Way
Vista, CA 92081
Voice: 760-727-8300
Toll Free: 888-900-4857
Fax: 760-727-9325
Email: apollo@hvlp.com

Apollo Sprayers International, Inc. ***One Year Limited Warranty***

Your T5020 Mist Applicator is WARRANTED by **APOLLO SPRAYERS INTERNATIONAL, INC.** for a total period of ONE YEAR on a PRO-RATED Basis (see schedule below) from the ORIGINAL date of purchase by the ORIGINAL PURCHASER. Proof of purchase to be included and all SHIPPING CHARGES to be pre-paid.

APOLLO SPRAYERS INTERNATIONAL, INC. upon examination of the machine/equipment will **replace or repair** at their discretion any defects in material or workmanship.


WARRANTY SCHEDULE

First Six Months.....Parts NO CHARGE.....Labor.....NO CHARGE
Second Six Months.....Parts NO CHARGE.....Labor.....CHARGED

Labor will be CHARGED at the current hourly rate, or specified Job Rate.

This WARRANTY does NOT include: miss-use, damage, neglect, alterations, disassembled equipment or modifications, lack of maintenance, cleaning, water damage to electrical parts and INCORRECT VOLTAGE CONNECTION. This WARRANTY is in lieu of all other express warranties, any WARRANTY implied by law, including but not limited to implied warranties of merchantability or fitness, is excluded to the maximum extent permitted by law and, if not excludable, it is limited to the duration of the express Warranty. No representative or person is authorized to extend this Warranty or to create for **APOLLO SPRAYERS INTERNATIONAL, INC.** any other liability in connection with the sale of any **APOLLO SPRAYERS product**. **APOLLO SPRAYERS INTERNATIONAL, INC.** shall not be liable for any consequential, incidental, or special damages of any kind directly or indirectly resulting from breach of any express or implied Warranty. Some States do allow the exclusion of limitation of incidental or consequential damages or limitations on the length of any Warranty so that the above limitations and exclusions may not apply to you; however, to the maximum extent permitted under applicable law, the only rights and remedies shall be to obtain a replacement for any defective product. This Warranty gives you specific legal rights and you may also have other rights which vary from State to State.

For warranty repairs inside the United States please call 888-900-4857 or outside the United States call, 760-727-8300. All repairs must be accompanied by an RMA number from the factory. Please call first before sending any equipment back to the factory for repair.

 **WARNING:** This product can expose you to chemicals including Chromium, which is known to the State of California to cause cancer and birth defects or other reproductive harm. For more information go to www.P65Warnings.ca.gov.